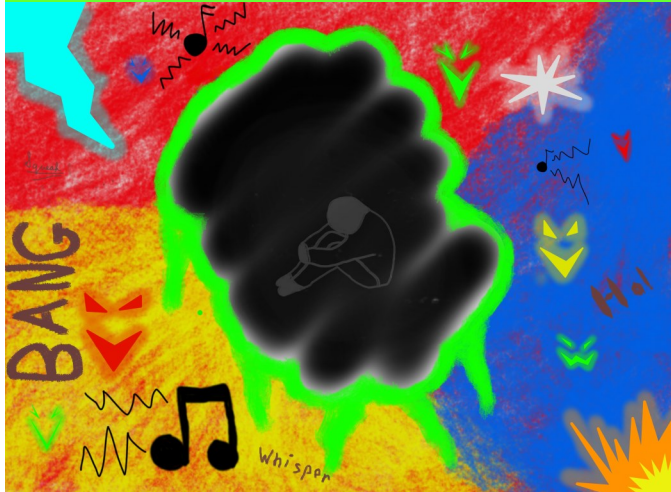


FEB NEWS

Luzerne-Wyoming Counties
Mental Health and Developmental Services
111 North Pennsylvania Avenue, Suite 300
Wilkes-Barre, PA 18701-3510
Phone: 570-825-9441
Email: mhdslw@mhdslw.org
Website: www.luzernecounty.org/mhds

Sensory Friendly Spaces Survey

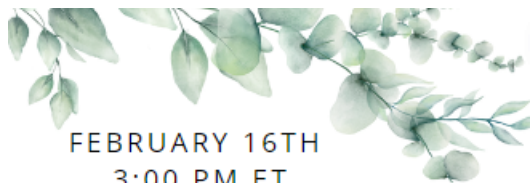


Peyton Breinich is a post-professional Doctor of Occupational Therapy student at Misericordia. As a part of her capstone project, she is collaborating with Mohegan Sun Arena in Wilkes Barre, PA to create sensory-friendly spaces for individuals with sensory processing difficulties.

The survey seeks to gather pertinent information that individuals within the local community would utilize while attending public events including hockey games, concerts, or shows on the ice.

The survey link is below and takes less than 15 minutes.

[OTD Capstone Project: Sensory Friendly Spaces Survey \(surveymonkey.com\)](https://www.surveymonkey.com)



FEBRUARY 16TH
3:00 PM ET

Making Their Days Happen: Paid Personal Assistance Services Supporting People with Disability Living in Their Homes and Communities

*Presented by Lisa Iezzoni, MD, MSc
Harvard Medical School*

Making Their Days Happen: Paid Personal Assistance Services Supporting People with Disability Living in Their Homes and Communities

February 16, 2023; 3-4 pm EST

Dr. Iezzoni examines the complex and nuanced roles of paid assistance in the lives of people with disabilities, including the experiences of these workers, the greater financial and systemic issues involved, and recommendations for improving the experiences of both support workers and the individuals receiving support.

FEB NEWS

Luzerne-Wyoming Counties
Mental Health and Developmental Services
111 North Pennsylvania Avenue, Suite 300
Wilkes-Barre, PA 18701-3510
Phone: 570-825-9441
Email: mhdslw@mhdslw.org
Website: www.luzernecounty.org/mhds

Just SO Short-term Online Speech Services

A new program for consumers with Pennsylvania Office of Developmental Programs (ODP.)
A licensed speech-language pathologist (SLP) can work with your team to:

- ✓ Assess communication
- ✓ Recommend communication focus
- ✓ Select and set up a communication device
- ✓ Write reports for funding
- ✓ Plan communication supports
- ✓ Teach strategies
- ✓ Troubleshoot

This is NOT ongoing speech therapy or communication specialist services.

for ODP consumers

10 hours per consumer

limited availability

telepractice

The Pennsylvania Office of Developmental Programs (ODP) funds these services for ODP consumers and their families/teams. SLPs are on staff at TechOWL at the Institute on Disabilities at Temple University.

Questions? Contact TechOWL



<https://aaccommunity.net/so-speech-odp/>
1-800-204-7428
techowl@temple.edu

If you are interested in this new, free program go to <https://aaccommunity.net/so-speech-odp/>.

FEB NEWS

Luzerne-Wyoming Counties
Mental Health and Developmental Services
111 North Pennsylvania Avenue, Suite 300
Wilkes-Barre, PA 18701-3510
Phone: 570-825-9441
Email: mhdslw@mhdslw.org
Website: www.luzernecounty.org/mhds



JOIN US TO PLAY GAMES & MAKE NEW FRIENDS FOR MIDDLE SCHOOLERS



GAMES WE PLAY
DUNGEONS & DRAGONS
PUGMIRE
KIDS ON BIKES

EVERYONE IS INVITED TO JOIN

Table Top Role Playing Games with a therapeutic emphasis held in person for ages 12-15 yrs old.

MONDAY NIGHTS from 6-7:30pm
Starting in January 16th, 2023
Located at the Misericordia University Autism Center @ 50 Lake St. Dallas, PA 18612

Online registration:



ACCE Partnerships

GOODWILL INDUSTRIES NEPA
CHILDREN'S SERVICE CENTER
MISERICORDIA UNIVERSITY
MANSFIELD UNIVERSITY
HOPE ENTERPRISES, INC.

Youtube Information:



Contact Us: inclusivecommunityadvocates@gmail.com



pennsylvania
DEPARTMENT OF HUMAN SERVICES

MyODP Redesigned Navigation Now Live

Announcing MyODP's redesigned navigation structure is now live. Resource pages now reside on Home.MyODP.org without the need for login. MyODP.org will continue to host all Trainings and role-specific resources that require login.