

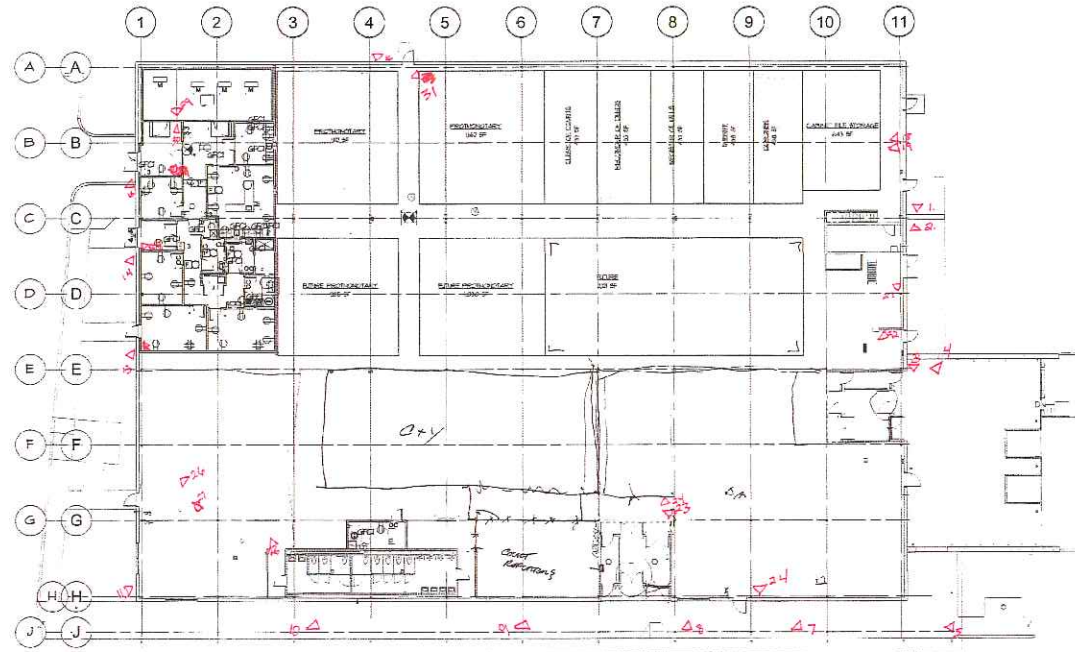
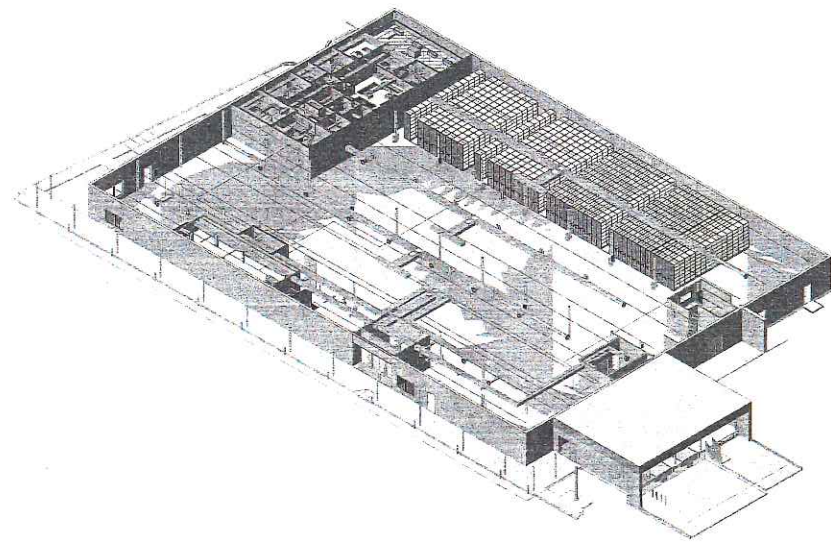
RECORDS RETENTION BUILDING

• Exterior:

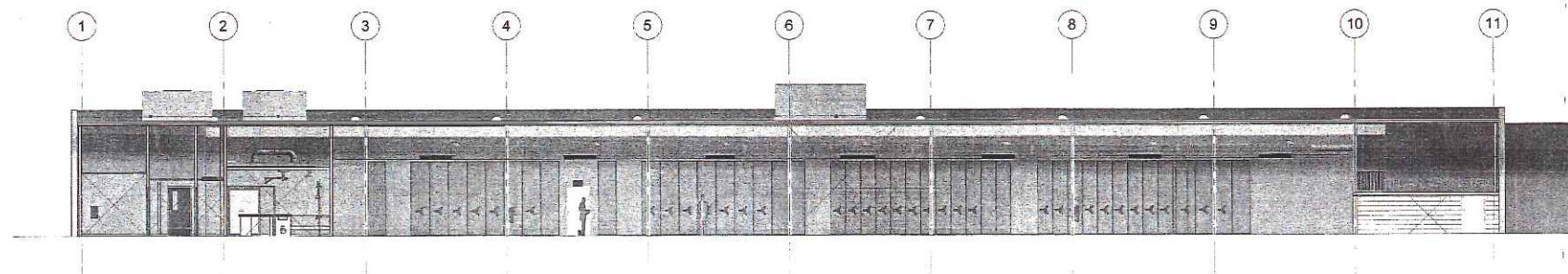
1. One (1) exterior camera covering two (2) entry doors and approaches leading to doors on North side of building pointing East.
2. One (1) exterior camera covering two (2) entry doors and approaches leading to doors North side of building pointing West.
3. One (1) exterior camera covering loading dock area on the North side of building under roof of loading dock.
4. One (1) exterior camera covering loading dock doors on the North side of building under roof of loading dock.
5. One (1) exterior camera covering loading dock passageway on the North side of building under covered walkway.
- Not Shown -* 6. One (1) exterior camera covering North entrance/exit property gate on the Northeast corner of building.
7. One (1) exterior camera covering entry door and approach leading to door on East side of building approximately 50ft South of camera covering loading dock passageway.
8. One (1) exterior camera covering entry door and approach leading to door on East side of building approximately 50ft South of camera listed immediately above under covered walkway.
9. One (1) exterior camera covering entry door and approach leading to door on East side of building approximately 50ft South of camera listed immediately above under covered walkway.
10. One (1) exterior camera covering entry door and approach leading to door on East side of building approximately 50ft South of camera listed immediately above under covered walkway.
11. One (1) exterior camera covering main public entry door and approach leading to door on the East side of building approximately 50ft South of camera listed immediately above under covered walkway.
- Not Shown -* 12. One (1) exterior camera covering South entrance/exit property gate on the Southeast corner of building affixed to end of covered walkway.
13. One (1) exterior camera covering entry door and approach leading to door on the South side of building.
14. One (1) exterior camera covering entry door and approach leading to door on the South side of building.
15. One (1) exterior camera covering entry door and approach leading to door on the South side of building.
16. One (1) exterior camera covering entry door and approach leading to door on the West side of building.
- Not Shown -* 17. One (1) exterior camera covering the entrance/gate to the 911 Center (across the street).

• Interior:

18. One (1) interior camera covering two (2) entry doors on the North Side of building pointing East.
19. One (1) interior camera covering two (2) entry doors on the North side of building pointing west.
20. One (1) interior camera covering loading dock doors on the North side of building.
21. One (1) interior camera covering entry door on the North side of building.
22. One (1) interior camera covering entry door on East side of building.
23. One (1) interior camera covering entry doors on East side of building.
24. One (1) interior camera covering north records area entry door on the East side of building.
25. One (1) interior camera covering South records area entry door and "gate" to records area on East side of building.
26. One (1) interior camera covering main public entry door and security screening area on the South side of building.
27. One (1) interior camera covering public area and counter on the South side of building.
28. One (1) interior camera covering entry door and foyer and the South side of building.
29. One (1) interior camera covering entry door, body receiving foyer, and secure sliding door on the South side of building.
30. One (1) interior camera covering door to cooler and limited access cooler area on the South side of building.
31. One (1) interior camera covering entry door on the West side of building.



FIRST FLOOR
SCALE 1/8" = 1'-0"



CROSS SECTION
SCALE 1/8" = 1'-0"



A - E Group, JV
140 Market Street
Willsboro, Pa. 18705-1003
570 - 822 - 8500
Fax 570 - 822 - 1097

A - E Group, JV
© Copyright 2016

UNAUTHORIZED USE OF DOCUMENTS
These documents are the property of A-E Group, JV and are intended for the use of the client only. No part of these documents may be reproduced, stored in a retrieval system, or transmitted in any form or by any means, electronic, mechanical, photocopying, recording, or by any information storage and retrieval system, without the prior written permission of A-E Group, JV.

These documents have been prepared for the client and are not to be used for any other purpose. The client is responsible for the accuracy and completeness of the information provided to A-E Group, JV.

These documents have been prepared for the client and are not to be used for any other purpose. The client is responsible for the accuracy and completeness of the information provided to A-E Group, JV.

THE CONTRACTOR SHALL VERIFY ALL DIMENSIONS AND CONDITIONS AT THE SITE.

LUZERNE COUNTY
RECORD STORAGE FACILITY
SHELVING
85 YOUNG STREET
HANOVER TOWNSHIP, PA

NO.	DATE	DESCRIPTION

DRAWN BY	CHECKED BY	AUTHORIZATION NO.	DATE

SCHEMATIC LAYOUT
PLAN, ISOMETRIC,
CROSS SECTION,
AND RENDERINGS

001
DRAWING