

---

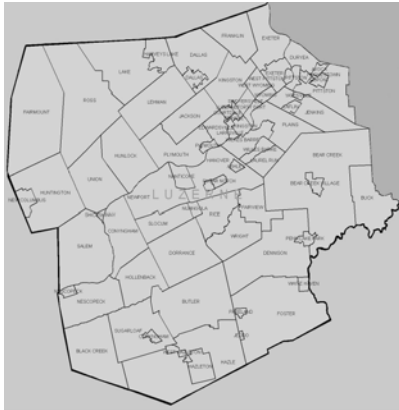
# Healthcare

---



# Luzerne County, Pennsylvania

## Healthcare Profile



### Hazleton General Hospital

700 East Broad Street  
Hazleton, PA 18201  
(570) 501-4000  
<http://www.ghha.org>

### Hazleton- St. Joseph Medical Center

687 North Church Street  
Hazleton, PA 18201  
(570) 501-6000  
<http://www.ghha.org>

### Mercy Special Care Hospital

128 West Washington Street  
Nanticoke, PA 18634  
(570) 735-5000  
<http://www.mhs-nepa.com>

### Clear Brook Lodge

Bethel Road  
Shickshinny, PA 18655  
(570) 864-3116

### Clear Brook Manor

1100 East Northampton Street  
Wilkes-Barre, PA 18702  
(570) 823-1171

### First Hospital Wyoming Valley Medical Center

1000 East Mountain Drive  
Wilkes-Barre, PA 18702  
(570) 552-3900  
<http://www.wvhcs.org>

### Geisinger Wyoming Valley Medical Center

1000 East Mountain Drive  
Wilkes-Barre, PA 18711  
(570) 826-7300  
<http://www.geisinger.org>

### John Heinz Institute of Rehabilitation Medicine

150 Mundy Street  
Wilkes-Barre, PA 18702  
(570) 826-3800  
<http://www.allied-services.org>

### Mercy Hospital of Wilkes-Barre

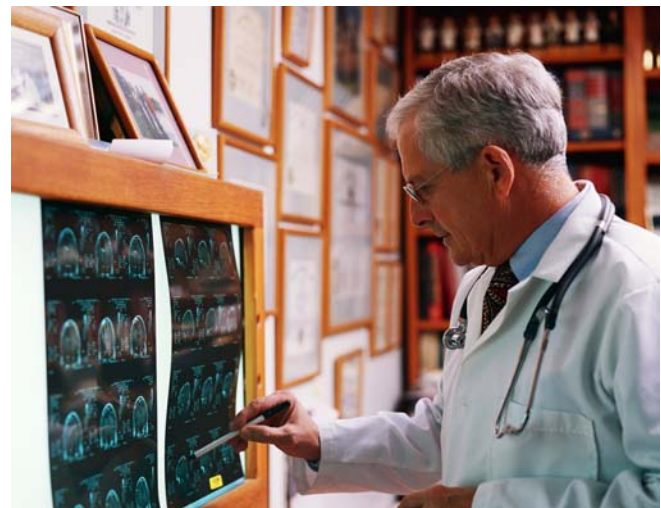
25 Church Street  
Wilkes-Barre, PA 18765  
(570) 826-3100  
<http://www.mhs-nepa.com>

### Veterans Affairs Medical Center

1111 East End Boulevard  
Wilkes-Barre, PA 18711  
(570) 824-3521 <http://www.va.gov/sta/guide/home.asp>

### Wyoming Valley Health Care System

575 North River Street  
Wilkes-Barre, PA 18764  
(570) 829-8111  
<http://www.wvhc.org>



Luzerne County's  
Municipal Cooperation  
Community Toolkit  
2005



[www.luzernecounty.org](http://www.luzernecounty.org)