

FEATURES AND BENEFITS

The ES&S iVotronic touch screen voting system is reliable, accurate, and easy to use. Casting your ballot is easier than ever, and results are tabulated securely in record time.



- ✓ **QUICK AND EASY.** Just use your fingertip to touch the names of the candidates and issues you'd like to select; review your choices, and press the Vote button!
- ✓ **FOR ALL VOTERS.** The new touch screen system has an audio ballot function for voters with visual impairments.
- ✓ **BUILT-IN SECURITY.** The system has features to ensure that your vote is accurately recorded. It does not allow overvotes and minimizes unintentional undervotes.
- ✓ **ACCESSIBILITY.** With an audio ballot function, multi-language capability, and portability for curbside voting, the iVotronic enhances the voting experience for *all* voters.

FOR MORE INFORMATION

Luzerne County Bureau of Elections
20 N. Pennsylvania Ave, Suite 207
Wilkes-Barre, PA 18701

Telephone: 570.825.1715
Email: elections@luzernecounty.org

“Voting should be easy. Accessible. And reliable. And in Luzerne County, it will be. We’ve recently invested in state-of-the-art, electronic voting machines. And using them is as easy as one, two, three.”

— THE LUZERNE COUNTY COMMISSIONERS



COUNTY OF LUZERNE

QUICK START GUIDE FOR VOTERS

ES&S iVOTRONIC TOUCH SCREEN VOTING SYSTEM

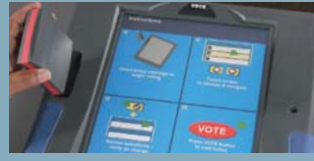


www.LuzerneCountyVotes.com

QUICK START INSTRUCTIONS FOR USING THE ES&S iVOTRONIC TOUCH SCREEN VOTING SYSTEM

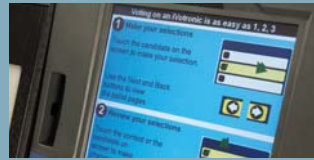
1 STEP ONE: Activate your ballot (performed by a poll worker).

A poll worker will activate your ballot by inserting the Personal Electronic Ballot into the slot.



2 STEP TWO: Learn about the machine through on-screen instructions.

Familiarize yourself with the instructions, and press the "VIEW BALLOT" prompt at the bottom of the screen.



3 STEP THREE: Make selections using the iVotronic touch screen.

Next, touch each candidate and/or issue for which you intend to cast a vote. Your selections will be highlighted in bold, and a green check mark will appear. You may change your selections at any time.



4 STEP FOUR: Advance to the next set of selections.

Once you have completed voting on a page, press the "NEXT" button at the bottom of the screen to proceed.

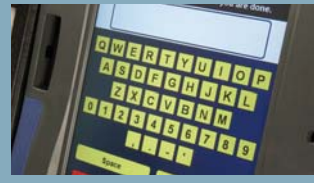
At any time, you may touch the "BACK" button to return to a previous page.



5 STEP FIVE: Cast a write-in vote, if needed.

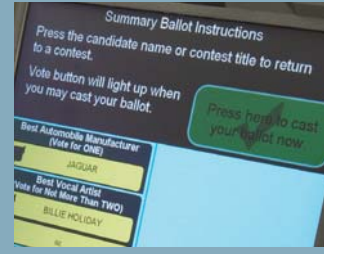
To cast a vote for a write-in candidate, touch the "WRITE-IN" option, and a keyboard will appear on the screen. Type in the name of a candidate and press "ACCEPT." Your selection will appear on the screen.

Continue making and changing selections until you complete the ballot.



6 STEP SIX: Review your ballot.

After you have completed the last page of your ballot, press the "REVIEW" button. Carefully review all of your selections.



7 STEP SEVEN: Change your selections, if needed.

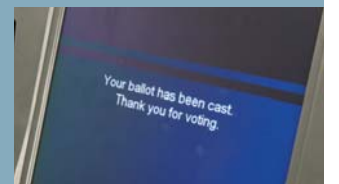
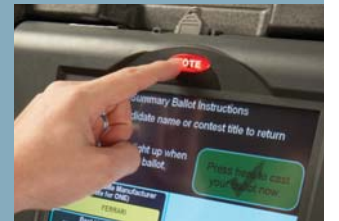
To change a selection, touch the box next to the candidate name or issue and reselect the proper choice. Then, touch the "REVIEW" button again to return to the summary screen.



8 FINAL STEP: Cast your ballot!

After you are satisfied with your selections, press the flashing red "VOTE" button or the large green check mark at the top of the screen. You will be asked to confirm your ballot one last time.

A "THANK YOU FOR VOTING" message will now appear. This means that you have properly cast your ballot.



AUDIO BALLOT FEATURE

SPECIAL FEATURE: Navigate selections and vote using the audio ballot feature.

The iVotronic audio ballot feature enables visually impaired voters to vote easily and in complete privacy. Using human voice (rather than digitally synthesized) projected through a headphone, this feature audibly presents both general use instructions and ballot choices to

the voter. Voter selections prompted and confirmed throughout the entire voting process via audio cues. Voters can navigate through the ballot through the arrow-shaped **UP** and **DOWN**, and diamond-shaped Braille-embossed keys.

